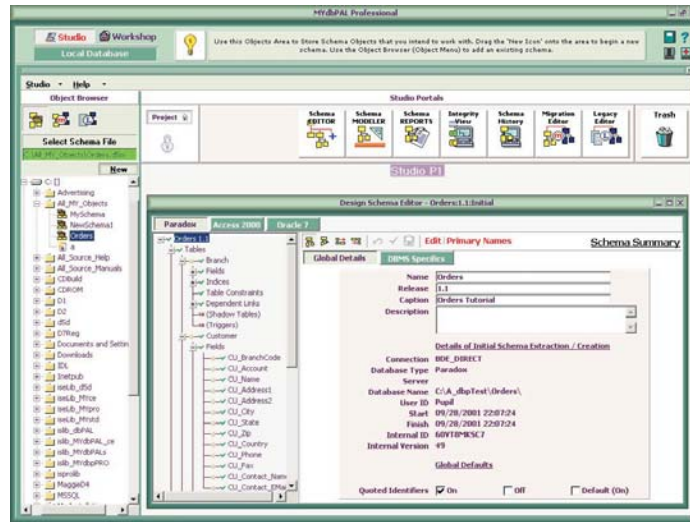




An IT-Map International software product



dbPAL is a family of cross-platform multi-DBMS toolkits offering rich functionality for database administrators and application developers. dbPAL products offer a complete desktop application for database development, lifecycle management and data extract, transform and load operations.



For working with Oracle, SQL Server, DB2, MySQL, Sybase, Pervasive, Interbase, Access, other major desktop databases and most ODBC compliant datasources.

Q. Do you want to simplify database work ?

dbPAL is an integrated, power-packed toolkit to help you manage, design, develop, upgrade, convert, migrate and synchronize - to, from and between - most modern DBMS types.

Q. Do you want to get the job done faster ?

dbPAL's Design Studio is the ultimate database schema editor. You cannot fail to be impressed by the ease and power of the system that gives you everything you need to develop schema designs in an integrated desktop environment.

Q. Do you want an easier way to move data ?

dbPAL's Workshop allows you to automate the movement of data in and out of databases - re-mapping as you go. Ideal for your test environment and ideal for Data Warehousing projects.

Q. Do you want to cut DBMS learning curves ?

dbPAL takes the headache out of working with new DBMS types. The Design Studio incorporates a DBMS mapping and verification capability that allows you to work one way with all DBMS types.

Q. Are you looking for BEST VALUE?

dbPAL's rich functionality allows you to avoid having to find and purchase several different packages to do parts of the job.

If you answer 'YES' to any of the above, contact us now to hear how dbPAL can seriously improve database productivity and save cost!



www.it-map.com



Multi-Platform Database Toolkit

dbPAL Workshop : The Workshop module in dbPAL is used to carry out all database updates and data extract / transform / load operations. dbPAL's WORKSHOP provides a simple but powerful graphical interface that could represent a database access or update command. This has been powerfully achieved using iconized objects in the context of a workshop.

The Workshop is a GUI based project environment where database maintenance activities, data Extract, Transform and Load activities and database synchronization activities can be created using Iconic representations of database, dataset and schema objects. It provides users with the ability to store Objects representing databases, schemas, sub-schemas and datasets in a project environment (the Workshop). Commands are constructed in dbPAL by dragging and dropping the required command onto a workbench. The command automatically displays its Object shopping list in graphical format, asking the user to supply the relevant objects from the storage area.

Use the Workshop to reverse engineer database schemas, to create new databases from dbPAL Studio edited schemas and to automatically update database schemas after change. Extract full or partial datasets from databases, and to create denormalized views for conversions. Update other databases from these datasets - choosing either to load from fresh, to update or even to synchronize data at the record and field level. Behind the scenes, dbPAL Workshop is acting as a client to the PAL server - the heart of dbPAL which carries out all database operations, reporting back to the Workshop when complete. Within minutes, simple Workshop actions can be used to extract both schema and data from one DBMS, and then to create and populate a DBMS of an entirely different type - an operation that could normally take hours of painstaking work.

dbPAL Studio : The dbPAL Studio integrates everything you will need for rapid and accurate database schema modeling and design.

Schema Editor

At the core of the Studio is a powerful Schema Editor that offers complete database Schema editing including SQL triggers, views and generators. Each Schema is created, edited, stored and managed as a single, multi-dimensional Object that incorporates the DBMS Type and the Sub-Schema dimensions. The Schema also incorporates version management, allowing users to trace all changes to individual items such as data fields. At any time, the user can view the list of changes made in the current version, and the Studio also has a separate History viewer that can reconstitute the Schema for a specified version and allow it to be viewed.

Multi-DBMS Schema Object

The dbPAL Schema Object is multi-dimensioned by DBMS type. This allows users to create and update schemas in native DBMS dialects, whilst offering automated translation to other required types. These DBMS dimensions are visible to users at all times, making dbPAL's schema editor a powerful tool for database conversions as well as a DBMS-independent design tool. Integrated Validation and Auto-correction All object based errors such as naming conventions, index and constraint rules are validated interactively. This considerably reduces development overhead by trapping errors as they occur. In cross-DBMS translations, the Schema Editor also provides a series of automatic fixes - such as object re-naming or trigger generation.

Data Modelling

dbPAL Studio also offers the ability to create comprehensive Data Models, allowing users to create drawings from existing schemas using automated techniques for fast operation. Model drawings are fully paginated for easy viewing and printing, allowing more or less detail to be provided according to needs. Users can create and update Schema tables from within the Modeling facility.

Schema Documentation

dbPAL Studio includes a pre-written suite of 15 summary and detail Schema Reports providing users with complete schema design documentation.

Migrations and Conversion

Included in the Studio are powerful productivity tools for database conversions, migrations and translations of legacy databases.

For more information about dbPAL and to download a trial version, please contact

usinfo@it-map.com